

My Settings

You can modify your personal registration details, edit your preferences and alerts.

Within **My Settings** you can also customize your ScienceDirect homepage by editing favorites lists, your **Quick Links** and turning features on and off.

Alerts

You can create and edit a variety of email alerts on ScienceDirect such as:

- Search alerts
- Topic alerts
- Volume/issue alerts
- Citation alerts

These alerts are also available as RSS feeds.

NEW! Inline reference preview

An inline reference preview enables the viewing of reference information when the cursor moves over a reference marker in the body of an article.

Related Articles

Related Articles enables the display of articles that are highly related to the source. This functionality can be found on pages with search results, table of contents, and on the article page.

NEW! 2collab integration

The comments, ratings and tags that researchers add to articles in 2collab are included on each article page in ScienceDirect.

NEW! Preview tabs

Preview tabs facilitate one-click access to the article abstract, figures/graphs and references.

2collab button

The 2collab button allows you to bookmark research in 2collab (www.2collab.com).

Additional features

ScienceDirect has many other useful tools including:

- in-depth FAQs
- Help files easily accessible through the help button on every page
- a comprehensive InfoSite containing **step-by-step online tutorials in many languages** at www.info.sciencedirect.com
- **Top 25 alerts** keep you up to date with the 25 most downloaded articles from any of 24 subject areas and approximately 2,500 journals

For more information, please contact your nearest Elsevier Regional Sales Office.

<p>North and Central America E-Customer Service P.O. Box 945, New York, NY 10159-0945 USA Tel: 1 888 615 4500 (+1 212 462 1978, if calling from outside the USA and Canada) Fax: 1 212 633 3680 E-mail: usinfo@sciencedirect.com</p>	<p>Europe, Middle East and Africa E-Customer Service P.O. Box 211, 1000 AE Amsterdam, The Netherlands Tel: +31 20 485 3767 Fax: +31 20 485 3432 E-mail: nlinfo@sciencedirect.com</p>	<p>Asia and Australasia E-Customer Service 3 Killiney Road #08-01, Winsland House 1 Singapore 239519 Tel: +65 6 349 0222 Fax: +65 6 733 1050 E-mail: sginfo@sciencedirect.com</p>
<p>South America E-Customer Service Rua Sete de Setembro, 111/16 Andar Rio de Janeiro - RJ - 20050-006 - Brazil Tel: +55 21 3970 9300 Fax: +55 21 2507 1991 E-mail: brinfo@sciencedirect.com</p>	<p>Japan E-Customer Service 1-9-15 Higashi-Azabu, Minato-ku, Tokyo 106-0044, Japan Tel: +81 3 5561 5034 Fax: +81 3 5561 5047 E-mail: jpinfo@sciencedirect.com</p>	



www.sciencedirect.com

sd_geninfo0508



Quick Start on ScienceDirect

Introducing ScienceDirect

ScienceDirect is constantly developing new, innovative initiatives that make it easier and faster to conduct research, and it does so, among other things, by using the input on the development of its new features provided by its users. The results of these initiatives can be seen in the new functionality that has been added to the platform in 2008.

This guide helps you make the most of these new features as well as current functionality. An online step-by-step tutorial is also available when you click on "Help" on the ScienceDirect homepage.

The improvement of ScienceDirect is a continuous process. We'd love to hear what you think. Please click the "Contact Us" link available on every page in ScienceDirect.

What are the benefits of ScienceDirect?

- Fast navigation to quality information helps you be productive and gain a competitive advantage.
- Your recent actions are tracked and recorded on the homepage, so you can quickly return to successful searches and downloaded articles.
- You can create personalized email alerts on the spot, while you are browsing or reading a table of contents, increasing your instant access to developments in your field.

- Add your Quick Links to the homepage so you can easily jump to sections of ScienceDirect that you use frequently, as well as external websites relevant to your work.

- Custom RSS feeds help you to stay up to date with your research.

- Cited By in Scopus Count shows how many times an article has been cited in Scopus.

- Spell checker helps you save time re-entering search queries.

- Related Articles improves article discoverability and reduces the risk that you accidentally miss important information.

- 2collab button allows you to bookmark research in 2collab, Elsevier's free collaborative research tool.

- 2collab integration: The comments, ratings and tags that researchers add to articles will be included on each article page in ScienceDirect.

- Inline reference preview enables the viewing of reference information when the cursor moves over a reference marker in the body of an article.

- Navigational improvements: preview tabs - on the results page or table of contents page – facilitate one-click access to the article abstract, figures/graphs and references; a new navigation pane on the left of the screen allows researchers to search within results and refine results using new filters.

ScienceDirect never stands still. We're here to make sure you continue to benefit from the world's leading online STM full-text resource. If you have any questions, please let us know.

Start from the ScienceDirect homepage.

Quick Search

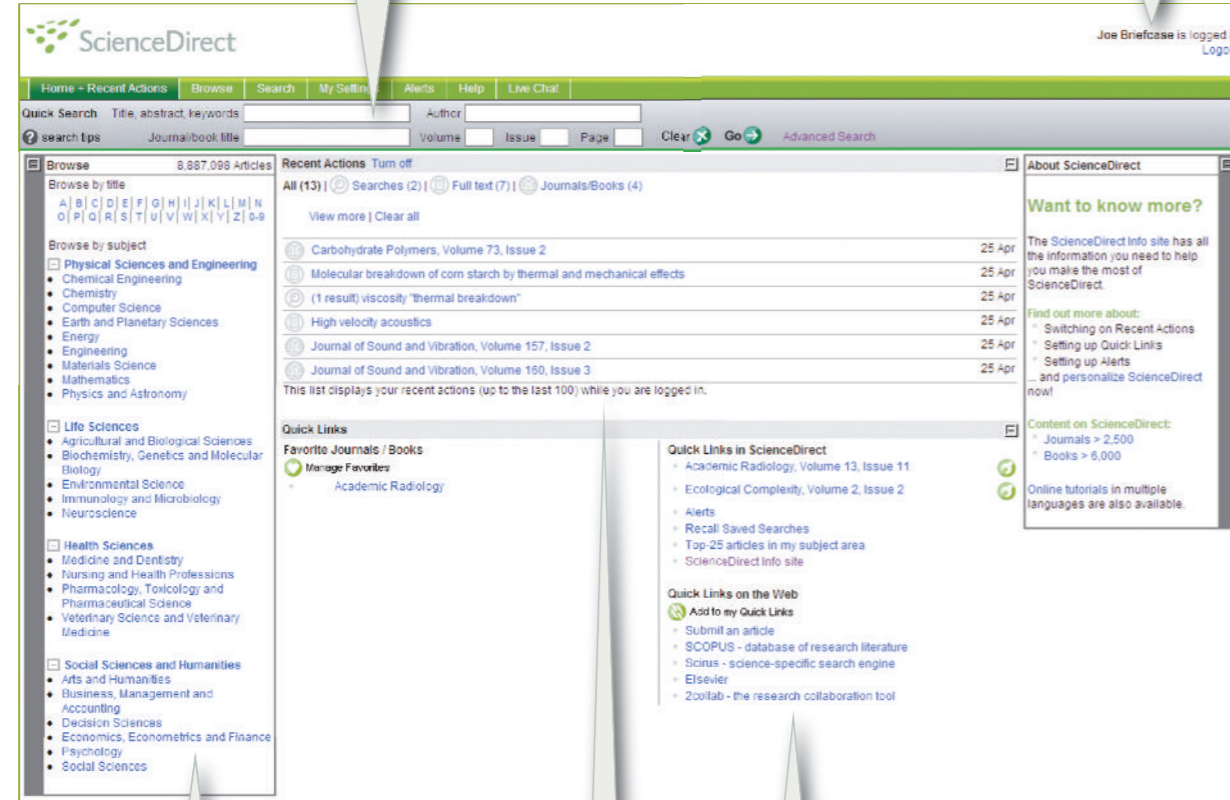
Quick Search effectively supports the four most frequent research tasks and is available on every page.

On ScienceDirect you can search:

- A specific title
- A specific article by publication / volume / issue page search
- A specific author name
- Related articles by searching specific terms

Registration and Login

Click on **Register** to create your personal profile. The details you provide will create a customizable homepage with all the information you regularly need at your fingertips. With the **Remember Me** option you do not have to log in every time because you are "remembered" and have automatic access to your personalized features.



Homepage Browse

Immediate access to a simplified but effective browse by title and subject.

Recent Actions List

All recent actions are stored, for example recent searches, recently visited articles, journals and books. The most recent 100 actions are viewable on your homepage. You can choose to turn off or minimize this function.

Personalization Features

You can set your ScienceDirect homepage to settings relevant to your individual needs.

- Alerts on favorite publications and saved searches to keep up to date
- Add your own quick links, not only to ScienceDirect articles, but to any website
- Open and close sections of the site as you require

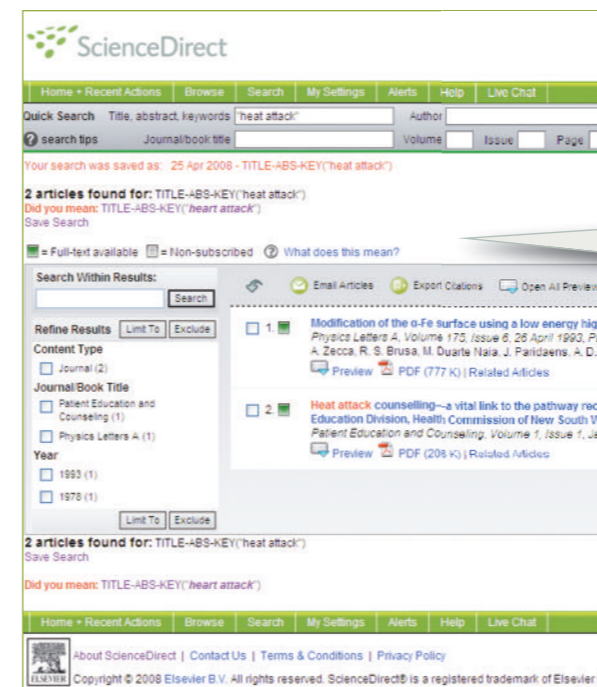


Browse

The Browse page lets you select multiple categories and sub-categories. You can:

- Browse journals and books together
- Access Articles in Press immediately, if available (accepted but not yet published in print journals)
- Focus your research by choosing the way you want the list displayed (e.g. alphabetically or by subject)
- View content from multiple subject areas at the same time
- Add titles to your Favorites List
- Create volume / issue alerts for specific titles
- Manage your research by limiting the list based on your subscriptions

The journal and book homepage displays volume / issue lists and the most recent issue's table of contents for quick access and navigation. View full-text results for subscribed content, and abstracts for non-subscribed content.



Search and spell checker

With the search function you can source and see your past searches for all full-text sources.

The spell checker recognises spelling errors using a built-in dictionary. For example, if a customer enters "heat attack" as a search query, the spell checker will ask if the customer intended to search for "heart attack".

You can easily save searches by simply clicking "Save Search".

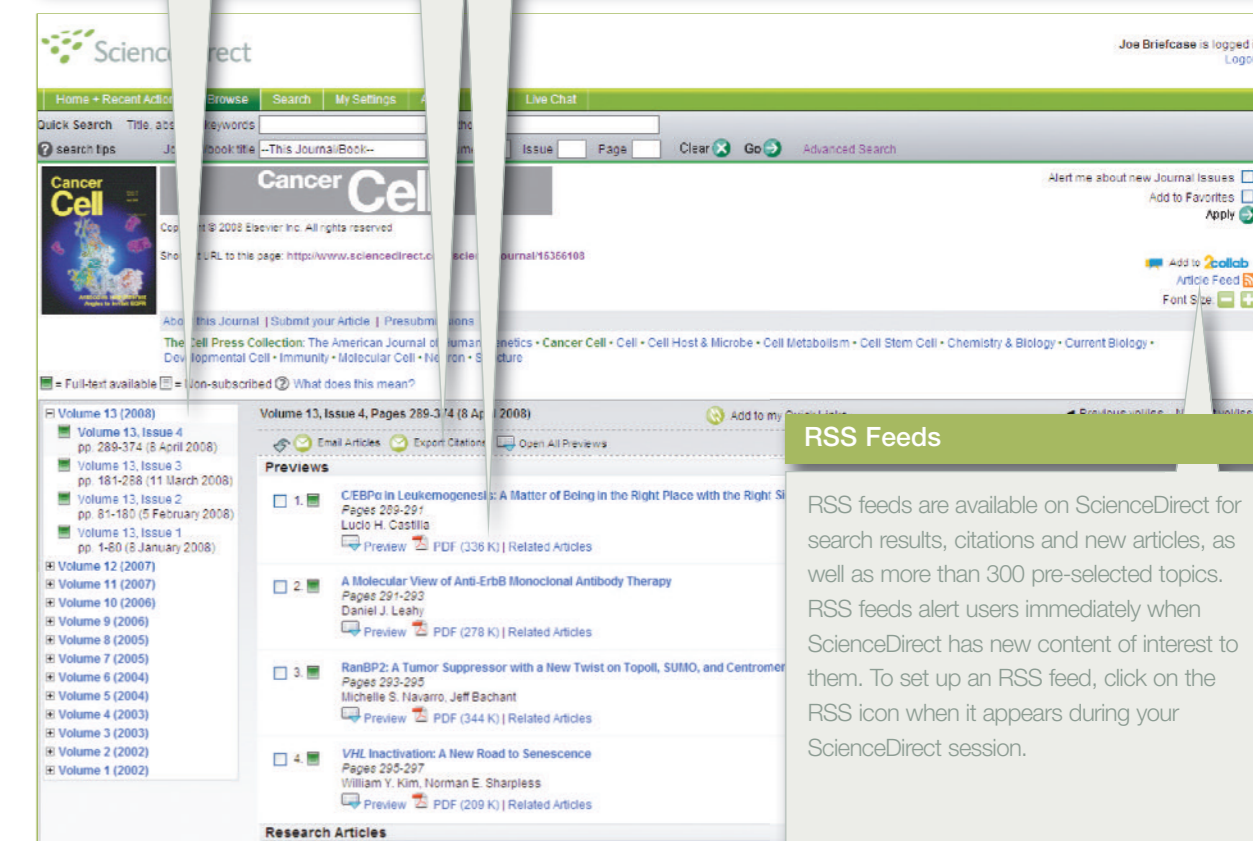
Table of Contents

The Table of Contents page intuitively helps you find what you need, by filtering through volume, issue, abstracts or article lists.

You can export or email selected articles, export citations, add to Favorites or Quick Links, or create an alert.

Each article has preview tabs that provide quick viewing of the abstract, references and tables/figures.

A link to the PDF is also provided.



RSS Feeds

RSS feeds are available on ScienceDirect for search results, citations and new articles, as well as more than 300 pre-selected topics. RSS feeds alert users immediately when ScienceDirect has new content of interest to them. To set up an RSS feed, click on the RSS icon when it appears during your ScienceDirect session.

Results Filtering

A new navigation panel on the left of the screen allows you to search within results and refine results using the following filters:

- Content Type
- Journal/Book Title
- Year

